

The Fly Tyer's Corner by Matt Bennett

Craft Fur Baitfish

This is my take on a Craft Fur Baitfish. While I didn't come up with the original fly, I've fished it for quite a while and have tweaked it over the years to my liking. It's a great mixed-use big baitfish fly for the Lower Colorado or off the jetties on the coast. This is an easy fly to cast and uses a tying method known as hollow tying to get bulk without much weight.

Hook: Partridge Attitude Extra 4/0

Thread: .006 Mono

Tail: SF Blend, EP, or other synthetic, and Flashabout

Body: Craft Fur, reverse tied

Gill Color: Polar Chenille

Eyes: 10MM Mirage Eyes

Adhesive: Loctite Gel Super Glue and Loon UV Flow

Picture 1: Place your hook in the vise and create a jam knot with the thread. Mono is slick so take extra care to ensure it's secure.



Pictures 4: Using a hollow tub or straw, push the club of craft fur back towards the bend and tie it down to secure.



Picture 2: Take a hank of SF Blend and secure it in the middle. Reverse the forward clump back over the bend of the hook and secure. Top with half 6-8 strands of Flashabout.



Picture 5: Move up the hook shank, and repeat this process.



Pictures 3: Move up the shank slightly. Prepare a clump of Craft Fur and clean out the underfur. Tie it in by the butt section so that it encompasses the entire hook shank with the tips facing towards the eye.



Picture 6: Move up and repeat yet again, but this is where you'll start to add in a top color.

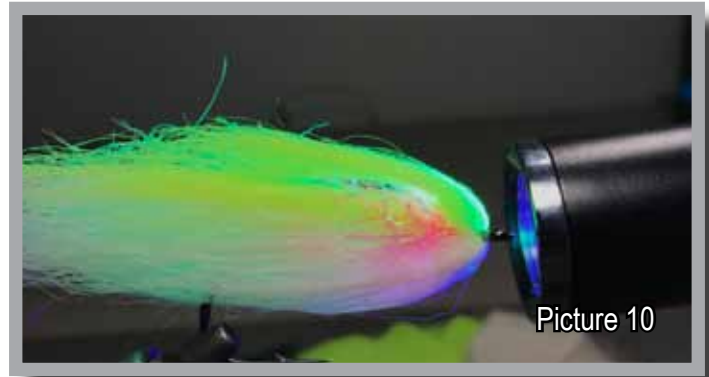


Fly Tyer cont.

Pictures 7: Tie in a small section of Polar Flash and wrap 3-4 times. Secure and trim.



Pictures 10: Cover the section near the hook eye in a small amount of UV glue, 360 degrees around the shank. "Push" the craft fur towards the eye to create a bump for the head. Cure with a UV Torch.



Picture 8: Move up to the eye of the hook and tie in another two clumps. You will whip finish this as the tie in point, leaving the

Picture 11: Glue on your eyes. Press and ensure they are secure.



Picture 9: Use a tube or straw to push back the front-facing pieces.

Picture 12: Add barring or other accents.

